

# Fundamentals of Medical Interpreting

for bilingual and multilingual individuals



**September 15, 2022 - December 3, 2022**

Thursdays 6 – 9 pm and Saturdays 8:30 – 11:30 am  
**Synchronous and Asynchronous Format** via Zoom Meeting

## Language Offered – Spanish

Other languages available with a minimum of 3 participants  
Subject to language coach availability

The components of the program include practical applications of fundamental interpreting skills, effective communication in the triad (client- provider- interpreter), listening and memory skills, comprehensive medical terminology in target languages, human anatomy, and physiology vital to effective medical interpreting, and methods of interpreting in special settings. Role playing and medical terminology are incorporated into each session.

A certificate of completion is provided upon completing the course and passing the final exam

## Assessment Dates

All registrants must attend an assessment session to be eligible for enrollment

Fall 2022 Assessment (Must attend ONE assessment on either of the following dates)		
Date	Start Time	Location
September 8, 2022	6:00 pm	Zoom Meeting
September 10, 2022	8:30 am	Zoom Meeting
September 12, 2022	6:00 pm	Zoom Meeting

The Zoom Meeting link will be provided 2 days prior to assessment  
Download the latest Zoom update 48 hours prior to this training

## Fees

	Assessment	Tuition	Total
<b>Non-Healthcare</b>	\$50	\$900	\$950
<b>Healthcare</b>	\$50	\$400	\$450

Employees of health care facilities that offer services to MassHealth members will receive a discount of \$500. This funding is available after all other resources from employer for education and training are exhausted. A letter verifying employment is required.

Students who live, work, and/or volunteer in Berkshire County may qualify to receive a \$500 tuition discount. This offer is limited to a first come, first serve basis until funds have expired. Proof of employment, residency, or volunteer status is required. Tuition discounts are made possible by grants from the Jewish Women's Foundation of the Berkshires and the Lee Bank Foundation.

Payment can be made with all major credit cards.  
Registration support: [skirby@berkshireahec.org](mailto:skirby@berkshireahec.org) or 413-842-5160



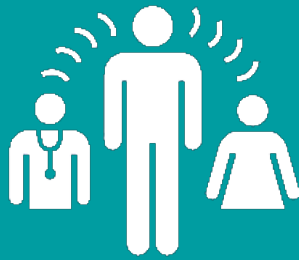
**Commonwealth  
Medicine**



Berkshire AHEC

# Fundamentals of Medical Interpreting

for bilingual and multilingual individuals



**September 15, 2022 – December 3, 2022**

Thursdays 6 – 9 pm and Saturdays 8:30 – 11:30 am

**Synchronous and Asynchronous Format** via Zoom Meeting

## Registration

Berkshire AHEC provides on-line registration for its continuing education programs. Payment can be made with all major credit cards. Upon registration for an assessment date a non-refundable \$50 fee will be due. An additional deposit of \$300 will be required upon passing the assessment and enrollment in the 60- hour course. The remaining registration fee is due by or before September 15, 2022. If you are unable to register electronically, please contact [skirby@berkshireahec.org](mailto:skirby@berkshireahec.org) so we can assist you in registering. Please visit [www.berkshireahec.org](http://www.berkshireahec.org) to register for this and all upcoming programs.

## Certificates and Completion Requirements

Participants are expected to log in, attend the entire program, and complete/submit an evaluation. (Instructions will be provided) Upon completion of final assessments with a minimum score of 85%, course practicum session and receipt of the evaluation, certificates will be mailed within two weeks after the program to the address provided upon registration. Participants will not receive a certificate of completion until full course payment has been received.

## Refunds

The \$50 assessment fee is non-refundable. Upon passing the assessment and being enrolled in the 60-hour course, a \$300 deposit is required in order to access required course materials. Berkshire AHEC does not provide tuition refunds once participant has access to electronic course materials. If an individual requests a refund after electronic course materials have been distributed; due to illness, a partial refund may be made of any amount paid to-date above the non-refundable assessment fee and tuition deposit.

## Special Requests

If you are hearing impaired or are a person who is differently abled who requires accommodations, please contact Berkshire AHEC 15 days prior to the training.

## For More Information

Silvana M. Kirby  
Director of Medical Interpreter Training  
[skirby@berkshireahec.org](mailto:skirby@berkshireahec.org)

Berkshire AHEC  
[www.berkshireahec.org](http://www.berkshireahec.org)

